

## LOCATION

Epoche & Espri is located in

**Avenida de la Vega, 1  
Alcobendas (Madrid)**



That is 17 km away from Madrid city center, and only 20 minutes from Madrid Barajas International airport.

You can follow this link to find how to use Public Transport in Madrid:

<http://www.ctm-madrid.es/>

## HOW TO COME FROM THE MADRID BARAJAS AIRPORT

To come from the airport, take a taxi and ask to take the M-12, direction A1. This page may be handy to be shown to the driver, in case your Spanish is not very fluent.

### **Avenida de la Vega, 1 Alcobendas (Madrid)**

**Salida 17 A1, dirección Alcobendas,  
primera rotonda a la derecha**



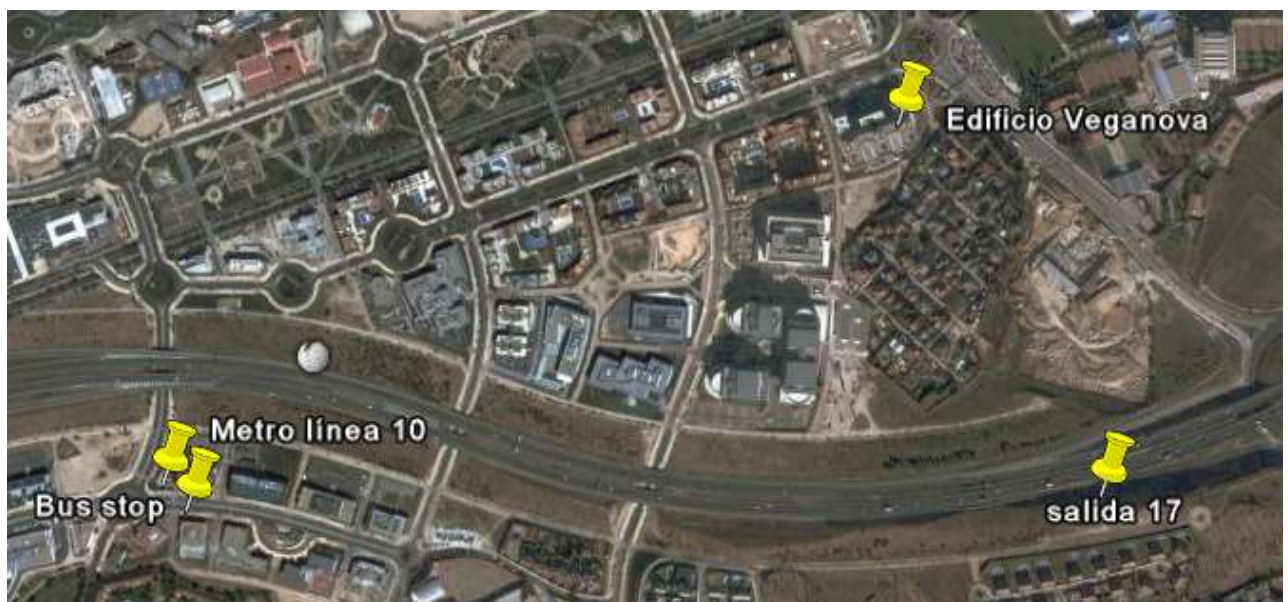
## HOW TO COME FROM MADRID DOWNTOWN

There are 3 ways to reach our offices by public transport from Madrid downtown:

1. Go to PLAZA DE CASTILLA, and then take green bus no. 159



2. By taxi, you must ask the driver to go through road A-1, exit no.17



3. By Metro (Underground) **Line 10**, and the closest stop is **“La Moraleja”**.



This stop is 1,200 metres away from Epoche & Espri. There are 2 options: Walk for 20 minutes or take a bus, either the L9, C10 (yellow bus, Circular) or the 159 line. All of them leave you at the front door of our facilities.



## **HOTELS IN MADRID**

We propose you the following hotel selection that includes hotels near Epoche&Espri, in Alcobendas, convenient hotels located in the north of Madrid City, and other luxury/modern hotels with added values.

### **HOTELS AT WALKING DISTANCE FROM OUR OFFICES:**

Hotel EUROSTARS GRAN MADRID (Aprox. 150,00 €)

<http://www.eurostarshotels.com/en/hotels-in-spain-madrid.html>

Hotel RAFAEL MADRID NORTE (Aprox. 130,00€ - 160,00€)

<http://www.rafaelhoteles.com/index.php?lng=uk>

### **HOTELS IN THE NORTH AREA OF MADRID**

CONFORTEL PIO XII (Aprox. 125,00€-135,00€)

<http://www.confortelhoteles.com/flash/english/pioxii.php>

Walk to Caidos de la División Azul, and take bus no. 107 or 70 to Plaza de Castilla. 10 minutes estimated travel time.

HOTEL NH EUROBUILDING (Aprox. 175,00€)

15 min walk to Plaza de Castilla, or walk to Paseo de la Castellana and take bus no. 27

<http://www.nh-hotels.com/nh/en/reservations.html>

### **HOTELS IN “PASEO DE LA CASTELLANA” AXIS**

HOLIDAY INN (Aprox. 160,00€ - 190,00€)

Locate in front of Real Madrid Football Stadium, and only a few minutes walk to El Corte Ingles Magazine Stores.

Cross the road and take bus no. 27

<http://www.ichotelsgroup.com/h/d/hi/1/en/hotel/tojsp?rpb=hotel&crUrl=/h/d/6c/1/en/hotelsearchresults>

OCCIDENTAL MIGUEL ANGEL (Aprox. 135,00€ - 180,00€)

Cross the road and take bus no. 27

<http://www.miguelangelhotel.com/index.php?language=en>

HOTEL ADLER (Aprox. 195,00€)

<http://www.epoquehotels.com/h.php/madrid-hotels/boutique-hotel/h/adler/l/en/>

SILKEN PUERTA CASTILLA (Aprox. 170,00€)

Paseo de la Castellana, 191 (Madrid)

<http://www.hoteles-silken.com/hotel-puerta-castilla-madrid/>

## **SHOPPING NEARBY**

Only 2 bus stops from Epoche &Espri you could find one of Madrid biggest shopping centers: Plaza Norte 2, with more than 100 shops of most of the famous brands, restaurants and cinemas.

Also there, you can find IKEA, Carrefour, Media Markt, PC City, Leroy Merlin and Boulanger. Close to the Metro stop, you find Diversia, a leisure centre, with several restaurant, bowling, fitness and cinemas. In the same area, Moraleja Green waits for you, a small shopping center with luxury brands, cinemas, restaurants and a Pitch and Put golf place.